

Recommendations for Conservation Strategies

Cry of the Water
Dan Clark
February 24, 2010

Karen Lane

Diseases Killing Threatened Elkhorn Coral in Lauderdale-By-The-Sea



Problems

- No Protocol to deal with outbreak of diseases
- Current Monitoring not structured to capture bleaching, diseases and harmful algae blooms

Recommendations for Solutions

- Funding for the Coral Disease & Health Consortium to conduct lab work on samples
- Monitor reef in the time of the year when water is warmest and diseases are most prevalent



Elkhorn Coral October 2009



- Need for Adaptive Management

- Follow-up needed when outbreaks are reported



Priority Staghorn in Broward County



Staghorn Thicket September
2003



Staghorn Thicket September 2009 Mass Die-Off



Problems

- Current SECREMP Monitoring site not capturing mass die-off of Staghorn Thicket
- Florida DEP Press release Staghorn Coral Thriving off Ft. Lauderdale, Aug 26, 2009

Recommendations for Solutions

- Change in who and how we monitor our reefs
- Reports must be more accurate to improve public trust.



Proposed Staghorn Nursery Transplantation Project

- Transplantation may be futile if we don't address what's killing corals in the first place
- Potential to spread diseases
- When we talk about more tools in the Tool Box we didn't mean pruning shears
- This project may further degrade donor areas
- Donor colonies must be monitored at injury sites
- Questions have not been answered about this project



Broward County Segment III Dredge and Fill Project Impacts

Port Everglades to Miami-Dade County Line

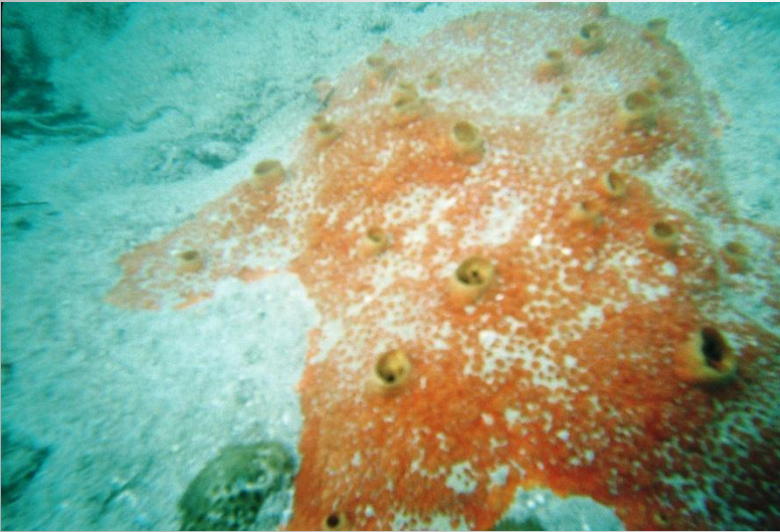


- Over 60 Acres of Reef Burial
- Hundreds more acres of reef impacted
- 1.75 millions cy of poor quality sand pumped on beaches in Segment III

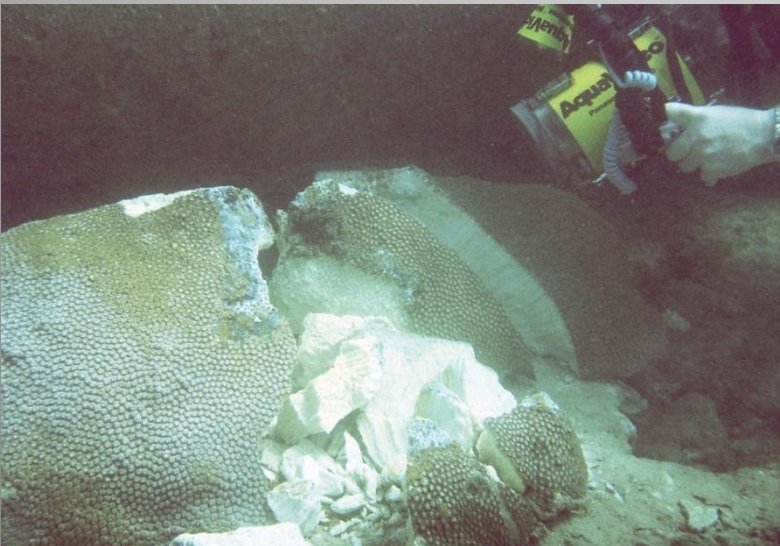


- Staghorn being buried
- Millions of Dollars of Mitigation needed to off-set impacts to this Segment
- 36-month Post Construction report not completed in a timely manner

Broward County Segment III Dredge and Fill Project Impacts



Impacts from Long-Term Silt,
Sediment and Turbidity



Additional Mechanical Damage
Corals crushed by Sand Transfer pipe

Recommendations for Priority Coral Reef Habitat Broward County

- **Monitor reef in the time of the year when water is warmest and diseases are most prevalent**
- **Best Management Practices for Beach Maintenance**
- **Change who and how we monitor our reefs**
- **Reports must be more accurate to improve public trust**
- **Reports must be turned in a timely manor to be used as a management Tool**
- **Funding for the Coral Disease & Health Consortium to conduct lab work on samples**

Cry of the Water

P.O. Box 8143, Coral Springs, Florida 33075

www.cryofthewater.org

reefteam2@yahoo.com



Bryan Brooks